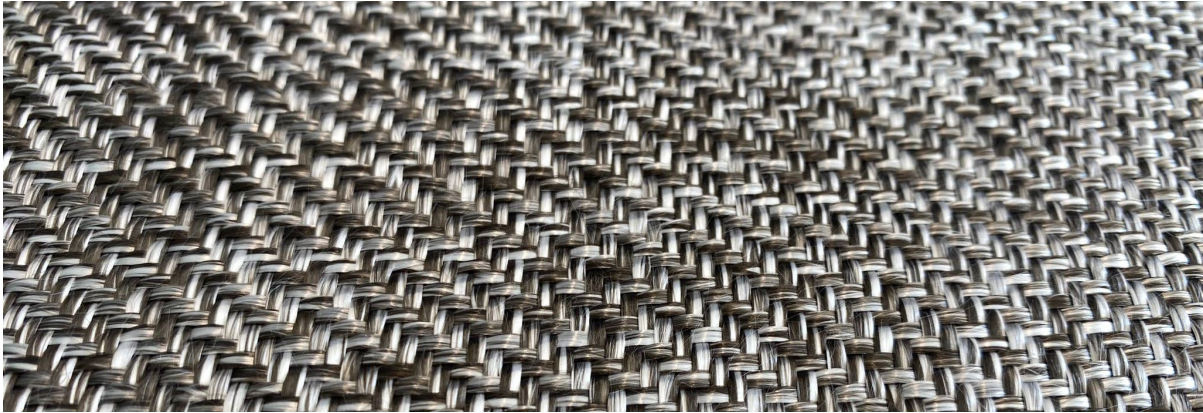


## PRODUCT DATA SHEET

**B24-001 COM-GF/PA6B-450T-TW-650**

Thermoplastic prepreg - Bidirectional Twill made with GF/PA6 hybrid yarns in Black colour.



## PROPERTIES

Property	Value
Fiber areal weight (FAW)	214,5g/m <sup>2</sup>
Weight per ply (PAW)	650g/m <sup>2</sup>
Resin content by weight	67%
Moisture pick up <i>(Kept in water 28 days at 23°C)</i>	1,2%
Consolidated ply thickness (CPT)	0,25mm

## FABRIC DESIGN

Property	Value
Fiber	GF/PA6
Pattern	Twill 2/2
Width <i>Contact us for special widths</i>	100cm
Density	7 picks/cm

## TYPICAL NEAT RESIN PROPERTIES

Property	Value
Density	1,12 g/cm <sup>3</sup>
Tg	65°C
Tm (melt)	220°C
Tp (processing)	250°C

## MAIN FEATURES:

- Flexible
- Recyclable
- Short Time Processing
- Easy to manipulate and cut

## TYPICAL APPLICATIONS:

- Sports goods
- Automotive
- Renewable Power

The described values in this technical sheet are the estimated results obtained in the TEXFIRE TEXTILS TECNICS S.L internal laboratory according to standard methodologies. TEXFIRE reserves the right to change the parameters without the obligation to notice it previously.

